

FMI

Systems Newsletter

December 08, 2003

Dear Subscriber,

Good morning! I'd like to welcome you to another fantastic day, productive week and to another great issue of the ***"FMI Systems Newsletter" !!!***

Well Thanksgiving has come and gone. Thanksgiving kind of kicks off the holiday Seasons. Before we know it, we'll be planning our New Years eve parties. Which brings up a subject I hate to approach! Please folks, as they say "Drink Responsibly". We all know the rules ... "Designated Driver, Take the keys at the door and so on and so on.

I am writing this from strictly selfish approach ... I don't want to loose one subscriber !!! Especially over the Holidays !!!

Over the past year I've gotten to know a lot of you, some by phone, others at conventions or maybe just by your e-mails. Never the less ... Good friends and subscribers are hard to come by!!! So PLEASE, have a great office party, but one we can all remember next year at this time.

OK, I'll get off my soapbox and on with the Newsletter.

As always, have a great, productive and prosperous week!

FMI Systems Newsletter
& website team and
Douglas Martindale
(800) 495-8958
douglas@furnitureman.com

All listings ending in

38

will be pulled from the next issue.
Contact us if your listings
end in this number and
you would like them to remain.

T (713) 461-5773
F (713) 461-6250
douglas@furnitureman.com

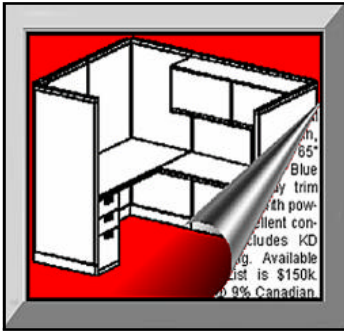
Mr. Refurb says ...
How in the world
Did it get to be
December already ?

It follows
November !
He's not too
Bright!



www.systemsnews.com

"It's only the beginning"



FMI Systems
NEWSLETTER ©
Volume IX, Issue 48
Monday, December 8, 2003

INSIDE

Classified Listings

For Sale:

Steelcase	2
Haworth	3
Herman Miller	5
Misc. Systems	7
Casegoods	9
Filing	9
Seating	11

Wanted to buy

All Listings.....	11
-------------------	----

Editorial

Tax Cuts	2
Calendar	14

1823 Sherwood Forest
Houston, TX 77043
T (713) 461-5773
F (713) 461-6250

www.systemsnews.com

©FMI Systems Newsletter©
This newsletter is copyrighted.
Federal law prohibits any unlawful
reproduction or distribution.

Guess What is Just around The Corner?



I know ... your saying "No kidding" ... Doug!

OK

Let's Talk About TAX CUTS !

Tax Cuts Paved Way for Better Economy

Speaker of the House J. Dennis Hastert released the following statement on news that the economy grew at 8.2% last quarter, instead of 7.2%, and that Consumer Confidence jumped 10 points, much higher than most analysts expected:

"I am glad to hear that the economy grew even faster than previously thought in the third quarter and that consumer confidence also beat expectations. A strong economy is good news as we enter the Holiday season. Clearly, the tax cuts we enacted into law paved the way for a better economy.

"The tax increases proposed by every Democratic Presidential candidate and most Democratic members of Congress are the biggest threat to economic growth, and should be opposed by anyone who wants to see the economy continue to perform well."

reprint from and
thanks to The OFDA Washington Wire

Steelcase

V1:

SC9-229- STEELCASE 9000 - (150)
65HX30W T&A PANELS AND (150)
65HX60W T&A PANELS-STANDING-GOOD
AS IS CONDITION- "BEIGE" FABRIC- #4650
"TV1" TRIM-POWER FREE-HAS BEEN RE-
FURBED-30W @\$10 PER PANEL-60W
@\$20 PER PANEL INCLUDING LOADING
AND PACKING- FOB: DEARBORN, MI- VIEW
PICTURES ON OUR WEBSITE-GREAT FOR
TELEMARKETING TO MAKE 30X60 WORK-
STATIONS-COMING OUT IN PHASES OF
APPROXIMATELY (50 EACH SIZE)-BUY
ONE PHASE OR ALL

V2:

SC9-477- STEELCASE 9000 STATIONS-
(60+) 65 HIGH AND 75 HIGH T&A 70X75 L
SHAPE STATIONS-#B604 "SEAFOAM" BEL-
GRADE FABRIC- #4692 "GV5" TRIM- #2821
"BLACK & WHITE" SPECKLE W/S- 30X70
AND 25X45 WORKSURFACES-FULL HGT.
PEDS-70W BINS W/LOCKS-NEW STYLE
LIGHTS-ETC.-STANDING-GOOD AS IS
CONDITION-1997 PRODUCT-4 CIRCUIT
FLAG POWER-AVAIL. NOW-VIEW PIC-
TURES ON OUR WEBSITE AND CALL FOR
INVENTORY- FOB: PA- WE DO NOT OWN
THIS PRODUCT!- LOOKING FOR OFFER
INCLUDING LOADING AND PACKING
Call Abe Goldstein or John Jemison
Goldstein Office Furniture & Systems
T (617) 787 - 4433 or (800) 966-3375
F (617) 787-0373

Email: wholesale@gof.com www.gof.com
REF#FSC-111703-ON

H1:

STEELCASE CONTEXT in 95 6x6 48h con-
text stations powered. \$175.00ea.
Loaded - 54 of them delivered at no
charge. The rest F.O.B. Texas 30" ws's -
2 peds - Wilshire Lark fabric - Cream
Components - Woodrose Speckle tops.
Kent Lightner - **Cube Solutions**
13614 Gamma Rd. - Suite 100
Dallas, TX. 75244 -866-734-6628 ext.107
972-783-4855 Fax
kent@cubesolutions.com
www.cubesolutions.com
REF#FSC-082503-28

V1:

Steelcase Context Standing in San
Fran, Ready Now - 130 stations in all
each station with a fully adjustable corner
and adjustable keyboard table. 80 8x8'
and 50 6x8's with D-Top shared ends.
Great condition context 4 years old. 1
mobile B/F ped and 1 48" overhead
Binderbin. Charcoal trim, Cream fabric
tiles and Cream colored laminate.
Sensor task chair (80) and side chairs
(100) This Product is Flawless

V2:

Steelcase Avenir-210 8x8 - 110 8x8's
on trailer's - 100 Standing ready now(call
for floorlans and inventory) - G001
Fresco Sanddrift is the Fabric - 4686
WB1 is the Trim - 4775 Malberry are the
componets - 2511 Natural Maple are the
surface's and ped top - 2 bins, 1 mobile
ped, and a TOWER - 1999 product. Per-
fect Condition -

V3:

Steekcase 9000 - 1994 product VERY
CLEAN - 275 stations - Majority 6x8 with
some 8x8 and 8x10 - Ready to go now,
Standing in San Jose, CA - Has to be out
by the end of the month. 2 bins, 2 peds
\$150.00 per station. You load, ON SITE
SALE OK

Cube King Inc.

T(714) 368-4748 or (714) 272-2523 cell
www.Cubeking.com to view inventories
Email: sales@cubeking.com
REF#FSC-100603-34

B1:

Steelcase Avenir: Steelcase Avenir: 99
Corner Stations. 45 - 5'6" x 7' corner
stations, 65" high spine with 41" high
step-down, 3' and 4' bin, 3' corner, 30"
and 48" return, 1 - 6/6/12 pedestal. 44
- 5'6" x 7' corner stations, 53" high, 3'
corner, 30" and 48" return, 1 - 6/6/12
pedestal. Shale trim, Amirante Seaspray
fabric with WB1 laminate. As-Is with good
cleaning. Available Now, FOB VA
Call Alan Simmers

Office Products

T (540) 434-8958 F (540) 434-0666
Email: alan@furniture-systems.com
www.furniture-systems.com
REF#FSC-012002-ON

N1:

Steelcase Avenir #61516L Nice as is
stations. Mostly 6x6. Trim, paint and
laminate: warm white. Fabric: TV2. See
our website www.furnitureagain.com
for pictures. FOB: Charlotte, NC. List
\$1,181,793. Sell @ 4% if you take all!
Cherry picking OK. Call Jim Atwood
National Prowend Furniture
T (910) 579-9232 F (910) 575-2151
Email: jdecker@valuebiz.com
REF#FSC-052001-ON

O1:

200 Workstations 6 x 6, 3-Circuit Power
Paint, Fabric, Laminate Warm Brown,
Value One, In Stock and Ready for
Delivery, \$650 Per Station/Quantity
pricing available, \$550 with 2 ea. b/f
pedestal

N1:

Showroom Special - 1 each b/b/f pedes-
tal - 1 each 60" binder bin - 2 power as-
semblies 30" & 42" - 1 each 60 eclipse
task light - Chrome Trim - GV1 Fabric
GV1 laminate - \$490 per station
based upon a pod of six.

N2:

Showroom Special - 1 each b/b/f pedes-
tal - 1 each 60" half height shelf - 2 power
assemblies 30' & 60" - 1 each 60" eclipse
task light - Chrome trim - red violet fabric
- WBV1 Laminate - \$550 per station,
based upon pod of six.

RBF Interiors - 5055 Natural Bridge
St. Louis, MO 63115
314-383-7003 - 314-383-5791 Fax
www.rbfinteriors.com
REF#FSC-042803-ON

G4

Steelcase Avenir: 80 6X6'6" stations
mostly 53" tall with some 65" tall. Less
than 2 years old in like new condition. 2
different complimentary gray fabrics with
light gray trim and laminate. Asking \$375
per station loaded in Los Angeles.

G5

Steelcase Avenir: 40 6X6'6" stations
65" tall with tan Cirrus fabric with TV-1
trim and oak laminate. 8-10 years old in
very good condition Asking \$200 per
station loaded in LA.

Quality Recycled Furniture

T (313) 563-6500 F (313) 563-7230
REF#FSC-070703-ON

S1:

Steelcase 9000-(750) 65 high - 6x7 corners - 3 cir. Power, Good shape, WB1 trim, green cirrus fabric, TV1 components, as is. Coming out in December. Coming out in December. \$150 per Station Loaded. Also 150 two drawer laterals (36") \$50.00 each - 400 five drawer laterals (36") \$125 each - all Steelcase 800 series.

US Office Furniture Inc. Call: Tim Branson @ [952-746-6986](tel:952-746-6986) or Fax: [952-808-0113](tel:952-808-0113) REF#FSC-111003-39

N2:

18 Steelcase Avenir Workstations. These Stations are 65" high and have straight (with slight curve) Worksurfaces. The Panels are Mauve, Trim is Beige, and Worksurfaces are Woodrose Speckle. A Box/Box/File and File/File Pedestal are included. These Stations were manufactured in 1988-89 and are in good condition. Product is located in Beltsville, Maryland. To view pictures and a detailed inventory listing, visit our web site at <http://www.olstrading.com/furniture>

OLS Trading, Inc: Scott Cornblatt Ph: 301-296-3100 ext. 160 1-800-375-6247

Email: scott@olstrading.com www.olstrading.com REF#FSC-120803-ON

Q1:

Steelcase Avenir 350 call center workstations 3x4 will divide. Moving warehouse must sell. Taking offers. FOB Addison IL. - Contact John Viknius **TRI STAR SYSTEMS** 406-222-8889 1-800-276-7777

john@tristarsurplus.com tristar@tristarsurplus.com REF#FSC-102703-37

R1:

56 Steelcase 9000 stations, 30x70 with 30x45 returns, TV2 Laminate, TV1 paint, wrapped with 65" high panels, fabric TV2 with TV5 Trim. Will sell UA's separately. FOB: Manchester, CT

Q1:

Steelcase Avenir Parting out 90 Steelcase Avenir, 6x8 Workstations, 65"H, 65x48 T/A - (194) 65x36T/A, (14) 65x24 T/A, (2) 65x18 T/A, (71) 53"x36"T/A, (9) 42"x48" T/A, (90) 48" Binder Bins w/lock and task light, (90) pair 25" Cantilevers, (90) 36" 1/2 Height shelves(170) 25" BBF & FF Peds w/lock, woodrose trim color, gray fabric, two work surfaces create "U" station.

V2:

400 Steelcase 9000, 42x30 T/A Panels, Expanded Boot, with 5-wire power, TV1 Trim, TV1 Fabric, good as is. Call for inventory and pictures. All Product is FOB: Manchester, CT. Contact **Matt Egan** - TE9090@aol.com **Transfer Enterprises, Inc.** Call [860-533-3373](tel:860-533-3373) or fax [860-533-3375](tel:860-533-3375) REF#FSC-102703-37

T1:

Steelcase Avenir, 100+ 6' x 8' work stations available in february. call me for any details and interest. looking for \$ 350 per station. very good condition. panels will not very little cleaning 5%.

Mike Rees @ Modular Furniture Consultants ph. 858.277.5170 fx. 858.277.4680 mrees@mfcworkstations.com www.mfcworkstations.com REF#FSC-111703-40

Haworth

U1:

Haworth Power Base - 34 6x8's, 2 Manager Station's, Teal Fabric, CLEAN, 42" lat, BBF Ped, Task Chair. Loading Tuesday in Newport Beach, CA. \$325.00 We KD and- load onto YOUR TRUCKS

S1:

Haworth Premise - 85 - 8x8's 2 years old ready to go in Denver \$625.00 per station **Cubeking, Inc** rego@cubeking.com 714-389-9993 (Home Office) 714-368-4772 (Fax) 714-272-2523 REF#FHW-112403-47

E1:

Haworth Premise - 350 stations, 42" high, 6x6 and 1-36" corner, with one ped, charcoal trim, two 36" returns, charcoal trim and each come with a chair - \$175.00 per station - standing in Denver. Call Cindy or Andy Borgstrom **Acquisitions Office** - 1900 Marina Blvd. - San Leandro, Ca 94577 T (510) 351-7511 F (510)351-7512 Email: acqo@earthlink.net REF#FHW-062303-25

B1:

LOCK CYLINDERS & KEYS: 2,500 New Haworth Lock Cylinders and Keys. Packaged in groups of 3. Available now, FOB VA. Minimum Qty. of 50. Call Alan Simmers @ **Office Products** T (540) 434-8958 F (540) 434-0666 Email: alan@furniture-systems.com REF#FHW-072103-ON

V1:

HAW-112- HAWORTH POWERBASE (34) 64X36, 64X48 AND 64X60 ACOUSTICAL PANELS- (65) CORNER WORKSURFS-(76) STRAIGHT WORKSURFACES-POWER-ETC.-WAS STANDING-AVAILABLE NOW-GOOD AS IS CONDITION WITH CLEANING-WAS REFURBED-VIEW PICTURES ON OUR WEBSITE AND CALL FOR INVENTORY-FR701 "#401 BLUE" NEUTRAL FABRIC-"SMOKE" TRIM- "SMOKE" WORKSURFS-FOB: OUR BOSTON WAREHOUSE @ 2% INCLUDING LOADING AND PACKING-(THIS WAS LEFT OVER FROM A RECONFIGURATION)

V2:

HAW-510- HAWORTH PLACES-(458) 68 HIGH, 56 HIGH AND 44 HIGH ACOUSTICAL PANELS-STEEL TOP CAPS-WAS STANDING-GOOD REFURB CONDITION-6 CIRCUIT TO 3 CIRCUIT POWER-AVAIL. NOW-FOB: OUR BOSTON WAREHOUSE- @ 2% INCLUDING LOADING AND PACKING-CALL FOR INVENTORY

V3:

HAW-247- HAWORTH PLACES-(246) 37 HIGH, 44 HIGH AND 68 HIGH ACOUSTICAL PANELS-GOOD CONDITION-WAS STANDING-AVAIL. NOW-3 CIRCUIT POWER FREE-MISSING TOP CAPS-COMPLETE WITH SIDE RAILS AND KICKPLATES-SILKTWEED OR BISCOTTI "WAFER" FABRIC-BEIGE TRIM-FOB: BOSTON @ \$10 PER PANEL OR 1% OF LIST INCLUDING LOADING AND PACKING-CALL FOR INVENTORY Call Abe Goldstein or John Jemison **Goldstein Office Furniture & Systems** T (800) 966-3375 or (617) 787-4433 F (617) 787-0373

Email: wholesale@gof.com www.gof.com REF#FHW-102003-ON

Haworth

N1:

Haworth Unigroup – Just awarded (270) stations 66"H, Great Inventory – (220) 8x8 stations, (16) 8x12 admin stations, (34) 8x11 managers stations. Typical station includes (3) Overheads, (1) BBF, (1) 2 Dr. 36" Lat., (1) Corner Surface with (2) Return Worksurfaces, (2) Tackboards, (3) Task lights, (1) keyboard tray. Also available are (45 to 55) matching 4 Dr. Lateral files, (270) Herman Miller Ergons, (6 to 8) conference tables. Inventory being completed now – but pictures available. Good As-Is with light cleaning. Available now. Call D.C. Ramey

The Liquidation Center

(T) 919-786-4800 - (C) 919-369-5491
REF#FHW-100603-34

X1:

Haworth Places w/Unigroup Components: 100 Complete 64H corner workstations in good AS-IS condition. Typical are: 40 – 7x7's, 45 – 6x7's and 19 – 7.5 x 7.5. All typical with corner surface, 2-full height pedestals and 2-overheads with task lights. Fabric is a Light Gray Basket weave (F-JX Sterling) with Smoke paint and laminate. Stations are standing in Atlanta, GA and ready for immediate shipment. Mike Burns @ **Facility Network**
Phone: (770) 310-5614
Fax: (770) 234-6621
Email: mburns@facilitynetwork.net
REF#FHW-061603-18

B1:

Haworth Premise Workstations

Haworth Premise Workstations in excellent condition, Sea Spray fabric panels with light gray trim, charcoal components and Sand laminate work surfaces. Approximately 6 year old.
- Call Geoff Thornhill

Corporate Interiors

T (302) 323-9100 F (302) 323- 9251
Email: gthornhill@ciodel.com
REF#FNEED-070703-ON

H1:

70 Haworth 8x8 workstations. 1998 Unigroup Powerbase 66" tall panels Biscotti Sea Spray with platinum trim, Places overheads (two overheads per station) with matching fabric and one

Premise 6/6/12 pedestal and one 2 high Premise 30" wide lateral charcoal color. Platinum work surfaces. As Is product, with minor panel cleaning. Located in Detroit. Available now \$400.00 loaded.

H2:

211 Haworth 8x8 workstations. 1998 Unigroup PowerBase 62" tall panels. Jabberwokky Manxome fabric with Greytone trim. Greytone worksurfaces. Two 4' overheads per station, 1.5 pedestals (charcoal color) per station. Excellent As Is product, very sharp looking. \$475.00 loaded.

T1:

Haworth Unigroup - 65 Haworth Unigroup Powerbase High/low 64/54" high located in southern california, available Dec. 14, graphite trim, pinpoint dove fabric \$375.00. Ready to be loaded on your trailer. Located in Southern California

Call Dot or Linda –

D Erwin & Associates LLC/ F.O.G.

(ph) 952-471-0363

E-mail:Linda@fogmn.com

(fax) 952-471-9367 2715 Casco Point Road, Wayzata, MN 55391

REF#FHW-102003-36

K1:

As-Is Haworth Powerbase/Tricircuit panels waiting to be refurbished. Please contact Baker Interiors at 517-321-5552 for further information.

Baker Interiors - Jim Baker or Brooke
517-321-5552

bakerinteriors@msn.com

REF#FHM-091503-31

S1:

Haworth Places and Power Base, 500 sorted by size and boxed on pallets in a warehouse. selling this as a refurb load not because of its condition, not sorted by color, which there are four trim and three fabrics 90% Gray Basketweave. Pedestals are Black and Beige@ 2% loaded on your trucks Need 15 semi trailers, located in Kansas City. We have till the end of month for removal. Please contact me for photos and a detailed inventory by stock number. I used 1989 pricing and it exceeds four million, double if I have to sort by color. This could be an AS IS project if you sort the trim colors.

Modular Systems

Call Joseph @ 303-663-4656

Fax 303-663-4797- Cell 303-916-8704

modsysbro@msn.com

REF#FHA-111003-39

Herman Miller

N1:

Herman Miller (40) 4 x 4 Herman Miller "Q" Workstations. They are 53" high and have one Light Ash corner worksurface. Tackable beltline panels have Orbit Woodruff fabric. Each station comes with a black mobile box/file pedestal including cushion on top. Stations are line powered and have black amber trim. New in 2001 and in very good condition! Product is located in Beltsville, Maryland.

N2:

Herman Miller: (53) 6 x 8 Herman Miller AO1 Workstations located in Washington D.C. These Stations are 66" high and have two straight worksurfaces. Included is one box/file pedestal and one flipper bin with tasklight. Stations are reconfigurable and have gray panels, brown trim and putty work surfaces. Good "as is" . Call Scott Cornblatt, President

OLS Trading, Inc.

Call 301-296-3100 X 160

1-800-375-6247 - fax 301-296-3101

scott@olstrading.com

www.olstrading.com

REF#FHM-092903-33

Q1:

Herman Miller A02: (100) As is Telecom stations. 39"H sold in pods of 6 or more, 4x2 w/power down the spline.

Q2:

IPS A02 Clone: Brand new 48x24 tele-marketing stations. Great condition, 12 year warranty. Trim is Dark tone work surfaces: Wilson art white nebula, black trim A02 style. 4-circuit power down the spline.

Q3:

Herman Miller A02: (150) 6x8, 67H as is stations, in pods of 4 or more. Each station has 4' corner, 4' return, 2' return, one 4' flipper unit, one 2' shelf (not shown), 4-circuit down the spline and no peds. Panel fabric is ultramarine grey, flipper fabric is ultramarine dark and trim is LN/DT. Very inexpensive.

Call for pricing.

Call Kent Lightner, **Cube Solutions**

T (972) 783-2722 F (972) 783-4855

preowned@cubesolutions.com

REF#FHM-112002-ON

Herman Miller

B2:

62 - 6 x 8 U-shape corner stations, 67" spline, 53" wings. Each with 2-4' corners, 2-2' returns, 2-peds, 1-shelf, 1-Flipper door unit, 2 task lights, Tool bar and 2 marker boards. LG trim, Innertone Light frosted laminate, Thatch Cottonwood fabric. Excellent As-Is condition, Available now, FOB VA.

Call Alan Simmers - **Office Products T (540) 434-8958 F (540) 434-0666**
Email: alan@furniture-systems.com
www.furniture-systems.com
REF#FHM-042103-ON

U1:

Herman Miller Ethospace: We have it . And lots of it. Complete inventories and cherry picking allowed. Fax your needs. Mark or Jeff, **The Lexington Group T (413) 746-3064 F (413) 788-0789**
Email: info@lexingtongroup.com
REF#FHM-042103-ON

K1:

Herman Miller Ethospace: We sell as is, blended and refurbished Ethospace systems. Call or email your request for complete stations or parts in substantial quantities. "We are the new Etho guys." Call Blake Botvin@**Ethosource, LLC** T (610) 286-1766 F (610) 286-1933
Email: blakeb@ethosource.com
www.ethosource.com
REF#FHM-042103-ON

K1:

Herman Miller AO1: (60) 8x8 workstations with some 6x8's. Corner with 2 returns, 2 flipper door units w/lights, one full height ped., plus tackboards. Silkweave blue grey w/light, tone trim. LT/MT laminate with MT base on panels, loads of power. FOB: Atlanta, GA.

K3:

Herman Miller AO1&AO2: Stock for refurb, tons of flipper door units, shelves, tack boards, task lights and panels. All product is FOB: Atlanta, GA. Too much to list, call or fax your needs. Call Mickey Heckman
Interspace Office Furniture T (330) 535-3434 F (330) 535-3227
Email: inter-mh@mindspring.com
REF#FHM-092002-ON

P2:

Ethospace: We have over \$5+ million in As Is and new in the box. Approx. 50% of our inventory is new. We have an excellent selection of hard to find parts as well as new old stock that isn't being manufactured any more. Lg selection of w/s (2500+), peninsulas (200+), storage cabs, frames, tiles & elec. Call George **Hero Office Systems**

T (612) 791-7930 F (952) 955-2599
24-hr services call (952) 955-1083
REF#FHM-100603-ON

H1:

100 + stations of AO1 available in the tri-state area 8 x 8 with corner, 2 straights, 2 hanging box file peds, shelf and overhead with lights would make great as-is stations and light on the wallet!!!! Call or email Monica for photos
Monica H. Stinson
Premier Office Solutions - 374 South Warminster Rd. - Hatboro, PA 19040
215-734-2300 ext. 110
fax 215-734-2310
REF#FHM-092903-33

V1:

Ethospace Frames, Tiles and Flipper Units for list of what we have available please call or fax us your needs.
SCP Enterprises Inc.
Call: Ken Berardi @ 734-973-1144
Fax: 734-973-1276
REF#FHM-042103-10

U1:

1500 Etho tops and Cantilevers - 500 42x24 Corner work surfaces with cantilevers - 1000 42x24 worksurfaces with cantilevers - All tops are Innertone and in nice condition. \$18 a set.
Mike Manser
Mansers Office Interiors
714-754-1696 or 714-754-1697 (fax)
714-863-1980 (mobile)
MManser@Mansers.com
www.Mansers.com
REF#FHM-112403-41

P1:

Herman Miller AO1: 250 stations 6x8 total. Plenty of storage ,Profile 180 6x8 stations with 36" corner ws. +55 stations 6x8 rectilinear ws.+ 15 managerial 6x8 with d-tops. Mt trim with light purple-gray fabric and gray work surfaces. FOB WI.. Contact John Viknius
Tri star Systems 406-222-8889
john@tristarsurplus.com
REF#FHM-090103-29

P1:

HERMAN MILLER AO1 - two trailers of Herman Miller AO-1 available in Kansas. The product is in a warehouse ready to load now. Please consider this refurb quality. There are a lot of extras. The inventory will be priced at a level of stealing. I have an Inventory but no photos. Serious buyers call me Joseph @ **Modular Systems** Phone 303-663-4656
Fax 303-663-4797 Cell 303-916-8704
modsysbro@msn.com
REF#FHM-102003-36

S1:

Herman Miller/Resolve Tripod Product 62x42, 62x42 with Resovle Componets 150 Stations are ready to go in Denver, CO - \$375.00 per station
Cubeking, Inc.
Call Mark Steinberg
T (714) 368-4748 or (714) 272-2523cell
Email: mts@cubeking.com
REF#FFHM-111003-39

U1:

500+ stations of Herman Miller Q available in Sarasota, FL still standing.
6x6, 6x8, 8x8 (all 2' & 4' panels, 4' corners, 2' & 4' returns). 150 stations 53" with drops to 39" 1ea shelf, 1ea ped, 1 ea keyboard, 1 ea light. Remaining are 67" , 2ea peds, 2ea O/H, 2ea lights, 1 ea keyboard. Half of the 67" product has a drop to 39" to accommodate for windows during original configuration. Product is 3 yrs old, built and sat in for 6 months. Make an offer - Call Mary Schipper
Office Furniture & Installations Plus Providing Workspace Solutions That Work !
813.880.7838 - office
813.967.4306 - cell www.ofiplus.net
REF#FHM-112403-41

Miscellaneous

V1:

SMED-309- SMED (11) 42 HIGH MODULAR MAHOGANY VENEER CORNER STATIONS WITH RISERS, PEDS AND LATERALS- APPROACH SIDE OF PANELS ARE TILED- MAHOGANY VENEER-WAS STANDING-GOOD AS IS CONDITION-FOB:OUR BOSTON WAREHOUSE-@ \$400 INCLUDING LOADING AND PACKING-AVAIL. NOW-CAN ALSO BE USED AS (11) INDIVIDUAL RECEPTION STATIONS-ALL MAHOGANY VENEER-NO FABRIC-VIEW PICTURES ON OUR WEBSITE AND CALL FOR INVENTORY

V2:

KMS-467-KNOLL MORRISON (40) 64 HIGH DUAL CORNER STATIONS CONSISTING OF: 8X8-1/2, 6X8 AND 6X8 DROPDOWNS-PLUS (5) KNOLL MORRISON MODULAR D SHAPE PRIVATES-KIOSKS-#W2962 BAUHAUS BLOCK FABRIC-#W LIGHT METALLIC TRIM-#B SNOW LAM.-3+3 POWER-(6 CIRCUIT, 10 WIRE)-WAS STANDING-GOOD AS IS CONDITION-1998 PRODUCT-AVAIL. NOW-VIEW PICTURES ON OUR WEBSITE AND CALL FOR INVENTORY- FOB: OUR BOSTON WAREHOUSE-@ \$400 PER STATION AND \$250 PER PRIVATE OFFICE INCLUDING LOADING & PACKING-#CG-468A CASEGOODS ALSO AVAIL- VIEW PICTURES ON OUR WEBSITE AND CALL FOR INVENTORIES

V3:

TRW-478- TRENDWAY STATIONS-(62) 66 HIGH TACKABLE ACOUSTICAL 7X8 AND 8X8 CORNER STATIONS-(1) 84 HIGH STATION WITH DOOR- 4 CIRCUIT POWER-2000 PRODUCT- "MINERAL" GALLERIA FABRIC-"PEBBLE" TRIM- STIPPLE "BIRCH W/S- STANDING-GOOD AS IS CONDITION-AVAIL. NOW-VIEW PICTURES ON OUR WEBSITE AND CALL FOR INVENTORY- FOB: PA- WE DO NOT OWN THIS PRODUCT!- LOOKING FOR OFFER INCLUDING LOADING AND PACKING
Goldstein Office Furniture & Systems
T (800) 966-3375 or (617) 787-4433
F (617) 787-0373
Email: wholesale@gof.com - www.gof.com
REF#FMISC-120803-ON

L1:

700 stations of QUANTUM PANELS - (150) 6x6 \$175ea w/ new bbf - (300) 6x8 \$195ea w/ new bbf - 30"x60"(call stations) \$60ea. - Panels are gray/white upgraded fabric or gray fabric. - Wood trim is grey or mahogany. - Worktops are grey essence(upgrade) or grey matrix - Supports and drawers are light grey. - Product is clean! - Installation available
Quantum Distributors
Chris Komarzec - 1302 26th Ave NW
Gig Harbor, WA 98335
P(253)278-6222 - F (253)853-7169
REF#FMISC-081103-26

A1:

Westinghouse-200-250 stations 1.8 million in 2001 list price numbers 61" high with a few 41" high recp stations. Two colors, mauve and blue. Has raceway, but no electrical modules. FOB Miami, Florida - Bob Scheifley
Robert Grant Enterprises
rge@bellsouth.net
Call 954.931.3445 Fax 954-923-4387
REF#FMISC-070703-21

P1:

Teknion: (250+) 7.5x10 stations, includes 30" deep work surfaces, 60" open shelf, 60" flipper door unit and BBF and FF peds. Available now, \$75,000 take all!
Cube World Liquidators, Inc.
T (408) 991-9231 F (408) 991-9070
Email: helen@cubeworldandmore.com
REF#FMISC-042103-02

H1:

Receptacle - Surface finish - BU black umber, HF-Inner tone light, UL-Soft white, Medium tone, Slate Grey - quantity 10,000 - Price \$3.00 each or \$2.00 ea for 50 nor more. Call **Office Outlet** Jeff Cullin @ (616)656-9501
Email:newsletter@officeoutlet.net
REF#FMISC-022403-ON

S1:

237-Hon Concensys 8x8's excellent as-is condition. All 4' panels 67"h, two peds, overhead, shelf, corner worksurface. Located in San Jose available now, light gray fabric, Call Bob Shiloh at **The Salix Group**, 602.263-3693 or email salixinc@cox.net for pictures.
REF#FMISC-110303-38

Z1:

Fortune 500 Company Liquidates Office Furniture - Save up to 90% Kimball Traditional Private Office Suites 66x30 Desk with matching double lateral credenza - \$1,800

Z5:

5 Drawer lateral files with overfiles, putty color @ \$550 - Make Offer! Steven at **Broadway Office Furniture** (212) 216-9220. Visit us online: www.broadwayofficefurniture.com
REF#FMISC.063003-20

S1:

2-8'x4' Maple conference tables each with 8-Vecta 4:00 chairs. 15-West Coast break room tables and 73-Leland Marquette wood sled chairs.

S2:

237 Hon Concensys 8x8's standing in San Jose, CA. Stations are very clean and sharp. Stations are installed in 6-packs with all 4' panels as shown in picture below. There are two peds per station. Price is \$400 each standing. Will sell all or part.

Call Bob Shiloh at **The Salix Group**, 602.263-3693 or email salixinc@cox.net for pictures.
REF#FMISC-111003-38

U1:

Transit for sale, Off Mod 368 standing in Pleasanton, CA

S1:

Teknion Transit for Sale: 8x10, or 6x8 Ready to go now. - San Jose, CA -

S2:

Knoll Morrison: 400 Complete Stations 8'x8' are ready to go in January of 2004, This product is very clean. Well Maintained - Standing in New York - No Power - \$300.00 per station

O1:

Cherry and Birdseye Maple wood veneers ushape desks with hutch - 56 birdseye maple and 42 cherry with hutch NEW IN BOX and in perfect condition, San Jose, CA . Each consist of peninsula top, knee-hole, credenza shell, hutch, credenza pedestal, bridge and center drawer, 950.00 per set. Call or e-mail me @ mts@cubeking.com for specific details and CAD drawings and layouts. This product is in California warehouse and is said to be in perfect condition . Call or e-mail me for CAD drawings .

O2:

TOS for sale: 300 stations of product 7 1/2 x 10 or 100 stations of 7.5 x 7.5 8 wire power, 30" deep surfaces, ped and marker board, bin, shelf, lights
Cubeking, Inc. Call for discount pricing Call Mark Steinberg
T (714) 368-4748 or (714) 272-2523cell
Email: mts@cubeking.com
REF#FMISC-100603-22

Casegoods

N1:

Trendway 500 Stations. Wedge Blue Fabric with Graphite Trim. Plus misc. case goods. Being phased out over a 12 month period of time. For pictures contact ... **TriStar Surplus**
John Viknius Call; **406-326-7777** or Email tristar@tristarsurplus.com
REF#FMISC-040703-ON

K1:

Knoll Unit Assemblies - 43 - L - Shaped Units with hutch and 2 bbf peds. 12 - U - shaped Units with hutch and 1 BBF - 1 FF Ped. FOB Detroit MI.

Ken Berardi, SCP Enterprises

3438 Ellsworth Road, Ann Arbor, MI - call **734-973-1144** - Fax: **734-973-1276**
Email: scp@htdconnect.com
REF#FNEED-092903-33

Q1:

Borroughs Metal Bookcases (103), They are 60" High x 36" Wide x 12" Deep, Three adjustable shelves, (74) warm brown, (29) putty.

Q2:

100 Metal Bookcases, 42"h X 36" wide, assorted colors and makes. (85) Steelcase 9000 Double Ped Desks 30x70, Light oak laminate, TV1 Paint, TV5 Trim, Box/File Peds.

Contact Matt Egan

Transfer Enterprises, Inc.

(860) 533-3373ph (860) 533-3375 fx
TE9090@aol.com
REF#FFILE-102703-37

Y2:

RARE FINDS: 2 Nelson CSS units, (one has fabric covered doors with matching curtains). - 1 Hans Wegner round dining table with 1 leaf. - 6 Arne Jacobson armchair #3200 - 4 Swan chair #3320 with matching coffee table - 1 Marble and stainless coffee table by Laverne international by Katavolos, Littell, and Kelley - 1 Desk by Fritz Hansen with Arne Jacobson desk chair - 1 Paul Henningsen vintage Snowball lamp - 2 Unknown lamps, one with 3 chrome balls and one with curved adjustable louvers - Vintage catalogues and prints. Call **Doug Wren**
doug@alternativeofficesource.com
Alternative Office Systems
www.alternativeofficesource.com
www.modernvintagefurniture.com
REF#FMISC-062303-19

L1:

Ergonomic Keyboard Platforms - Brand new Weber Knapp and Waterloo mechanisms, same as OEM's. Standard tray with gel palm rest, and/or mouse pad. Also will custom make to your specs. Limited quantities. Great prices. Call Norman Chambers

Fibersin Industries

For quotes call 616-403-2304 or Fax 616-796-9726

Email: nchambers@fibersin.com
REF#FMISC-092203-ON

V1:

Knoll Morrison: We sell as is, blended and refurbished Knoll Morrison systems. Call or email your request for complete stations or parts in substantial quantities.

Call Blake Botvin@ **Ethosource, Inc.**
T (610) 286-1766 F (610) 286-1933
Email: blakeb@ethosource.com
REF#FMISC-092002-ON

Z1:

Knoll Morrison: (64) Nice as is stations. Fabric: Inside gray w/pattern, outside charcoal gray; Trim: black; laminate: sand. Station 7-1/2x7-1/2 w.84x30, main surface and 60x24 return surface. (3) 30" overheads w/ one 90" task light, two FF and one BBF peds. Power down spline and first panel out. Spline and first panel, 64"H w/drop down to 58"H. Stations have 1,2 and 4 receptacles. 1993 product.

Call Jim Atwood

National Preowned Furniture

T (704) 522-1232 F (704) 522-1699
Email: jdecker@valuebiz.com
REF#FMISC-082002-ON

K1:

HM/SC panel parts, used and clone:
SC task light adapter bracket @ \$6.78
SC Pedestal adapter bracket @ \$6
SC Avenir binder @ \$6.50
SC end panel access covers
Ergon encapsulated spring @ \$7.95
And spray paint as low as \$5.95, all manufacturers. SC/HM Chair replacement kits. Back saving moving discs to move panels systems. Call Len Weiner

The Problem Solver

T (631) 286-5471 F (631) 286-6442
Email: panelking@aol.com
REF#FMISC-092001-ON

V1:

CG-468A- KNOLL CASEGOODS- GOOD AS IS CONDITION-1998 PRODUCT-(41) KNOLL PARACHUTE PNEUMATIC TASK CHAIRS WITH ADJUSTABLE ARMS-(26) KNOLL PARACHUTE SLED BASE GUEST ARM CHAIRS-(23) KNOLL PROPELLER MOBILE/GANGING TRAINING TABLES-(1) OAK-WOOD AUDIO VISUAL CABINET-(4) HERMAN MILLER CAFE TABLES AND (16) STACKING CHAIRS-VIEW PICTURES ON OUR WEBSITE AND CALL FOR INVENTORY & PRICING-FOB: OUR BOSTON WAREHOUSE-CAN SHIP WITH OUR INV#KMS-467 (40 MORRISON STATIONS AND 5 PRIVATES)-VIEW PICTURES AND

V2:

CG-493- CONFERENCE TABLE- 288" WIDE x 48" DEEP x 60" DEEP BOAT SHAPED LIGHT WALNUT WOOD-(3) PIECE CONFERENCE TABLE WITH LIGHT WALNUT WOOD PANEL BASES-(24) STEELCASE VALENCIA LIGHT WALNUT WOOD AND FABRIC TILT/SWIVEL CONFERENCE CHAIRS WITH CLOSED ARMS-EXCELLENT AS IS CONDITION-AVAIL. NOW-VIEW PICTURES ON OUR WEBSITE- FOB: BOSTON-\$3800 INCLUDING LOADING AND PACKING

V3:

CG-494- CONFERENCE TABLES-268" WIDE OR 196" WIDE x 65" DEEP RECTANGULAR SHAPED (3) PIECE CHERRY WOOD CONFERENCE TABLE WITH MARBLE INLAYS IN THE TOP AND (3) CHERRY WOOD 36" WIDE x 6" DEEP PANEL BASES-(IF CENTER 72" WIDE PIECE IS REMOVED TABLE WILL BE 196") 72" WIDE x 20" DEEP x 36" HIGH CHERRY WOOD CONSOLE WITH (2) D.D. STORAGE CABINETS BELOW AND (4) STORAGE DRAWS ON TOP-35" WIDE x 30" DEEP x 52" HIGH CHERRY WOOD ELECTRIFIED PODIUM WITH DOUBLE DOOR STORAGE WITH LOCK-108" WIDE x 20" DEEP x 29" HIGH CHERRY WOOD CREDENZA WITH (2) DOUBLE DOOR STORAGE CABINETS-72" WIDE x 20" DEEP x 29" HIGH CHERRY WOOD CREDENZA WITH (2) DOUBLE DOOR STORAGE CABINETS-269" WIDE x 46" DEEP x 63" DEEP BOAT SHAPED LIGHT WALNUT WOOD (2) PIECE CONFERENCE TABLE WITH (10) LIGHT WALNUT WOOD LEGS-(24) BRAYTON INTERNATIONAL ALL LEATHER TECHNIQUE TILT/SWIVEL PNEUMATIC CONFERENCE CHAIRS WITH CLOSED ARMS-EXCELLENT AS IS CONDITION-AVAIL. NOW-VIEW PICTURES ON OUR WEBSITE- FOB: BOSTON- \$10,000
Call Abe or John Jemison

Goldstein Office Furniture

T (617) 787-4433 or (800) 966-3375
F (617) 787-0373
Email: wholesale@gof.com
REF#FFILE-111003-ON

Casegoods

T1:

Steelcase 9000 - 150 two drawer laterals (36") \$50.00 each - 400 five drawer laterals (36") \$125 each - all Steelcase 800 series.

US Office Furniture Inc.

Call: Tim Branson @ 952-746-6986
or Fax: 952-808-0113
REF#FFILE-111703-39

V1:

Allsteel- 80 stations of really clean All-steel. Please request a photo. Your buying price is \$150.00 per station as is where is in San Jose.

Joseph @Modular System Brokers

Call 303-663-4656 - Cell 303-916-8704
Fax 303-663-4797
modsysbro@msn.com
REF#FFILE-120803-42

U1:

File Cabinets: Job#3288 - Lateral Files 2, 3, and 5 drawer models. Majority are by HON. Most have standard drawers, some flip front, all in good condition, must be out by the end of May. Scott Cornblatt, Vice President

OLS Trading, Inc.

Call - 301-296-3100 ext. 160
1-800-375-6247 - (fax) 301-296-3101
[Http://www.olstrading.com](http://www.olstrading.com)
scott@olstrading.com
REF#FFILE-120803-42

P1:

Anso: New units, conv. kits, for HM Ergon, Hon, chairs, comp. repair kits

P2:

Plan Hold: 10 15 x 62" blue paint cabinet vertical storage with 36 slots

P5:

SC, Hon, Allsteel: scratch & dent sale, DP, SP, left ,returns, wood & steel

P6:

SC: (100+) 30x60 utility tables, model #32024 Call Dennis or Dick

Quality Recycled Furniture

T (313) 563-6500 F (313) 563-7230
REF#FCG-042103-ON

P4:

Hon, Shaw Walker, SC: 2-5 drawer vertical lateral files

P7:

Steelcase: 24 2 drawer vertical files, putty, 18" wide x 29" deep x 28" high

P8:

SC Avenir: 20, 24 & 30" peds
Call Dennis or Dick

Quality Recycled Furniture

T (313) 563-6500 F (313) 563-7230
REF#FFILE-042103-ON

X1:

Herman Miller: (200) "F" front peds in as is condition. We have BBF 30" deep and (85) FF 30" deep in black umber. Buy one or buy all. FOB: Atlanta, GA.
Call Mickey Heckman

Interspace Office Furniture

T (330) 535-3434 F (330) 535-3227
Email: inter-mh@mindspring.com
REF#FFILE-092002-ON

X1:

File Bars: For Steelcase, GF, Storwall and Meridian, furniture legs, all types.
Call Lenny Weiner

The Problem Solver

T (631) 286-5471 F (631) 286-6442
Email: panelking@aol.com
REF#FFILE-092001-ON

F1:**New & Pre-owned filing equipment:**

Benchmark Filing & Shelving is in the business of selling new and pre-owned filing equipment. BFS can handle every need for any company big or small. BFS will layout and large scale file room to meet the needs of your company. We specialize in mobile file (rolling) systems, Time—2 rotary cabinets and legal and letter size stationary shelving. BFS can also provide industrial metal box storage and shelving on a grand scale.

Benchmark Filing & Shelving

T (281) 376-2800 or (713) 443-3133
or (832) 741-9586

REF#FFILE-082001-ON

A1:

350+ 5dr. Haworth Lateral Files \$135-\$175.00 ea..Smoke Med. Gray color
Chris Klass - **Office Systems, Inc.**
Minneapolis, MN www.offisys.com
cklass@offisys.com
P:952-475-2504 - F:952-475-2593
REF#FFILE-070703-21

Q1:

FILING: (60) GF 5 Drawer, Letter Size, Superfiler Vertical Files, repaints, good storage grade files, mostly beige colors. Steelcase Two Drawer 30", 800 series, Lateral files with lock, TV1. (30) Steelcase Five Drawer, 36", 900 series, Flipper Door Lateral Files with lock, TV1, Mint condition. (50) Steelcase Two Drawer, 42", 800 Series, Lateral Files with lock, TV1. (50) Steelcase four drawer, 36", 800 Series, Lateral File with lock, TV1. FOB: Manchester, CT - Contact Matt Egan

Transfer Enterprises, Inc.

(860) 533-3373ph (860) 533-3375 fx
TE9090@aol.com
REF#FFILE-102703-37

Seating

S1:

132-Hon ergo chairs, light gray frames with medium blue fabric and 90-matching four post side side chairs. 20'x5' wood edge racetrack conference table with 14-Brayton Technique chairs with wood arm caps and matching credenzas. Call Bob Shiloh at **The Salix Group**, 602.263-3693 or email salixinc@cox.net for pictures. REF#FSEAT-110303-38

N1:

CHAIRS: Great variety of Chairs available including: Dauphin 5-Star Swivel Chairs; Global 5-Star Swivel and Sled Base Chairs; Haworth 5-Star Swivel Chairs; Herman Miller Avian and Equa Chairs; and many more! Product is in great condition and is located in Beltsville, Maryland.

N2:

CHAIRS:(50) Steelcase Sensor Task Chairs available! These Chairs are Gray (with Black bases) and in good condition. Product is located in Beltsville. Scott Cornblatt, Vice President
OLS Trading, Inc.
Call - 301-296-3100 ext. 160
1-800-375-6247 - (fax) 301-296-3101
[Http://www.olstrading.com](http://www.olstrading.com)
scott@olstrading.com
REF#FSEAT-100603-34

T1:

Steelcase Criterion Chairs - Steelcase Criterion Chairs/VERY CLEAN 895 Chairs are ready to go in Albuquerque, NM - These chairs were purchased starting in 1998. Still under contract with Steelcase
Need to be removed on December 11, after 10:00 P.M. - \$60.00 per chair
Cubeking Inc. rego@cubeking.com - www.cubeking.com
714-368-4748 or 714-389-9993 (Office)
714-272-2523 (Mobile)
REF#FSEAT-111703-40

V1:

CG-468A- KNOLL CASEGOODS-GOOD AS IS CONDITION-1998 PRODUCT-(41) KNOLL PARACHUTE PNEUMATIC TASK CHAIRS WITH ADJUSTABLE ARMS-(26) KNOLL PARACHUTE SLED BASE GUEST ARM CHAIRS-(23) KNOLL PROPELLER MOBILE/GANGING TRAINING TABLES-(1) OAK-WOOD AUDIO VISUAL CABINET-(4) HERMAN MILLER CAFE TABLES AND (16) STACKING CHAIRS-VIEW PICTURES ON OUR WEBSITE AND CALL FOR INVENTORY & PRICING-FOB: OUR BOSTON WAREHOUSE-CAN SHIP WITH OUR INV#KMS-467 (40 MORRISON STATIONS AND 5 PRIVATES)-VIEW PICTURES AND CALL FOR INVENTORY

V2:

CG-493- CONFERENCE TABLE- 288" WIDE x 48" DEEP x 60" DEEP BOAT SHAPED LIGHT WALNUT WOOD-(3) PIECE CONFERENCE TABLE WITH LIGHT WALNUT WOOD PANEL BASES-(24) STEELCASE VALENCIA LIGHT WALNUT WOOD AND FABRIC TILT/SWIVEL CONFERENCE CHAIRS WITH CLOSED ARMS-EXCELLENT AS IS CONDITION-AVAIL. NOW-VIEW PICTURES ON OUR WEBSITE- FOB: BOSTON- \$3800 INCLUDING LOADING AND PACKING

V3:

CG-494- CONFERENCE TABLES-268" WIDE OR 196" WIDE x 65" DEEP RECTANGULAR SHAPED (3) PIECE CHERRY WOOD CONFERENCE TABLE WITH MARBLE INLAYS IN THE TOP AND (3) CHERRY WOOD 36" WIDE x 6" DEEP PANEL BASES-(IF CENTER 72" WIDE PIECE IS REMOVED TABLE WILL BE 196") 72" WIDE x 20" DEEP x 36" HIGH CHERRY WOOD CONSOLE WITH (2) D.D. STORAGE CABINETS BELOW AND (4) STORAGE DRAWS ON TOP-35" WIDE x 30" DEEP x 52" HIGH CHERRY WOOD ELECTRIFIED PODIUM WITH DOUBLE DOOR STORAGE WITH LOCK-108" WIDE x 20" DEEP x 29" HIGH CHERRY WOOD CREDENZA WITH (2) DOUBLE DOOR STORAGE CABINETS-72" WIDE x 20" DEEP x 29" HIGH CHERRY WOOD CREDENZA WITH (2) DOUBLE DOOR STORAGE CABINETS-269" WIDE x 46" DEEP x 63" DEEP BOAT SHAPED LIGHT WALNUT WOOD (2) PIECE CONFERENCE TABLE WITH (10) LIGHT WALNUT WOOD LEGS-(24) BRAYTON INTERNATIONAL ALL LEATHER TECHNIQUE TILT/SWIVEL PNEUMATIC CONFERENCE CHAIRS WITH CLOSED ARMS-EXCELLENT AS IS CONDITION-AVAIL. NOW-VIEW PICTURES ON OUR WEBSITE- FOB: BOSTON- \$10,000 INCLUDING LOADING AND PACK
GOLDSTEIN OFFICE FURNITURE & SYSTEMS PH: 617-787-4433 OR TOLL FREE 1-800-966-3375
FAX: 617-787-0373
EMAIL: WHOLESALE@GOF.COM
WEBSITE: WWW.GOF.COM
REF#FNEED-111003-ON

Z1:

SEATING:421-481N Steelcase Side chairs qty 270. and 454-481 Steelcase Side chairs qty 85. Steelcase Thonet stacking chairs qty 188.
Mike Johnson @ **Tri Star Systems**
406-222-8889 ext 225
mjohnson@tristarsurplus.com
<http://www.tristarsurplus.com/>
REF#FSEAT-063003-18

K1:

HM Ergon, Equa Seating: Newly-remanufactured, like new. No inventory, just in time production. Save your time.

U1:

WizBangOut Gaslift Removal Tool:
A new tool developed to remove a gaslift cylinder from office chair base or from the swivel/tilt mechanism. This WizBangOut tool will fit all standard office chairs. It is constructed of hard steel and built to take abuse. \$32.95 each plus shipping and handling.
Call Lenny Weiner-**The Problem Solver**
T (631) 286- 5471 F (631) 286-6442
Email: panelking@aol.com
www.oodlesofparts.com
REF#FSEAT-112403-ON

Q1:

SEATING: 300 Steelcase 421 Chrome Sled base Chairs with arms for refurb. 50 Herman Miller Equa side chairs with arms, Blue Fabric, Dark Frame, Good as is, 2000 Steelcase 454-180 Task Chairs without arms, GV5 frame, Blue Fabric, Good as is, sold cleaned and bagged.
Contact Matt Egan
Transfer Enterprises, Inc.
(860) 533-3373ph (860) 533-3375 fx
TE9090@aol.com
REF#FSEAT-102703-37



Office@Procure™

As highlighted in prior issues of Systems News:

- * Unique eCommerce partnership for middle market dealers
- * Keep superstores & others away from your customers
- * Expand product lines & differentiate vs. competitors
- * Enhance your marketing dialogue & add value
- * Generate incremental residual income

For more information or to sign up:

www.officeprocure.com

info@officeprocure.com

toll free: (866) 533-9459

EthoSource, LLC

Premium pre-owned office furniture

*Your Source
for
Pre-owned Ethospace*

Always buying and selling
Ethospace parts
and complete stations
in large quantities

Contact John Gallen or Blake Botvin

T (610) 286-1766 F (610) 286-1933

johng@ethosource.com or blakeb@ethosource.com

Do you have something to say?

Want to debate an issue, ask a question or maybe just get some insight from fellow readers?

Well, *Systems News* is giving you **your chance**. Each week, as long as there are voices to be heard, *Systems News* will print, at the editor's discretion, letters sent in by our readers.

Please keep them to issue related to the office furniture industry and no slanderous or liable remarks will be printed in the *Newsletter*.

Just think of this as a kind of open forum type for you to express your views and thoughts on issues in the industry. Or if you have a question or suggestion for the Newsletter itself, feel free to send those also.

Disclaimer: *Systems News* is an unbiased, objective publication therefore "Letter to the Editor" views and opinions are those of the author, not necessarily of the *FMI Systems Newsletter* or its staff.

Look forward to hearing from you!

Email to...

Douglas@furnitureman.com



Wanted to Buy

D1:

Need: We buy Ethospace and Knoll Morrison systems furniture. We prefer complete standing stations, but will evaluate all inventories.

D2:

Need: Herman Miller and Meridian peds needed. Ethosource has an ongoing need for B-front, Meridian and other style HM ped files. We prefer BU paint, but will evaluate all inventories. Send inventories now via fax or email. Call Blake Botvin **Ethosource, LLC** T (610) 286-1766 F (610) 286-1933 Email: blakeb@ethosource.com www.ethosource.com REF#FNEED-072803-ON

V1:

WANTED TO BUY: (ANYWHERE- FINDERS' FEES PAID)- AS IS OR FOR REFURB, IN SMALL & LARGE QTYS.- STEELCASE - HERMAN MILLER AO1, AO2, AO3, ETHOSPACE, RESOLVE, Q SYSTEM - HAWORTH - GF - GUNLOCKE - TRENDWAY - HARPERS - HON CONCENSYS AND TERRACE - TEKNION KNOLL MORRISON, EQUITY, DIVIDENDS AND CURRENTS - KIMBALL - AMSECO PANEL CONCEPTS - ALLSTEEL - REFF ROSEMOUNT - WESTINGHOUSE MERIDIAN - CASEGOODS - TELEPHONE SYSTEMS - MAINFRAME COMPUTERS LARGE COPY MACHINES

V2:

WANTED! ANYWHERE- DEAD OR ALIVE! HERMAN MILLER AO2 PANELS AND/ OR STATIONS, HAWORTH POWERBASE PANELS AND/OR STATIONS, AVENIR PANELS AND/OR STATIONS AS IS OR FOR REFURB - CONTACT: ABE GOLDSTEIN OR JOHN JEMISON - **GOLDSTEIN OFFICE FURNITURE & SYSTEMS** PH: 617-787-4433 OR TOLL FREE 1-800-966-3375 FAX: 617-787-0373 EMAIL: WHOLESALE@GOF.COM WEBSITE: WWW.GOF.COM REF#FNEED-120803-ON

N1:

Large quantities of 20d or 23d HM BBF and FF Pedestals for refurb. Call **Ken Berardi @734-973-1144** **SCP ENTERPRISES, INC.** Fax 714-973-1276 REF#FNEED-100603-24

D1:

NEED: 250 - 42" High Telemarketing Stations - dirt cheap, call with details. Call Geoff Thornhill @

Corporate Interiors T (302) 323-9100 F (302) 323- 9251 - C (302)345-7314 Email: gthornhill@ciofdel.com REF#FNEED-070703-ON

Z1:

NEED: Steelcase Avenir 5 wire, 3 circuit power ways in the following sizes: 18", 42", and 36".

Z2:

NEED: 400 to 500 task chairs, black, blue or gray, must be fully functional. John Viknius

Tri Star Systems Furniture, Inc. (406) 326-7777 (1-800-276-7777) tristar@tristarsurplus.com REF#FNEED-110303-ON

J1:

ONGOING NEED: Herman Miller A02 in all sizes and finishes. Must be matching and in good clean as is condition 5 years or less in age. Please fax or email all available inventories, pictures and any other spec's you have. We will evaluate any projects of 50 stations or more for this need. Call Tom Loughney **Network Business Furnishings** (972) 491-3700 F (972) 491-3755 Email: nbf@flash.net REF#FNEED-022001-ON

N1:

Looking to buy used Rosemount inventories. Tim Branson **US Office Furniture -** 15 W Cliff Rd Burnsville, MN 55337 **952-746-6985** REF#FNEED-040703-ON

N1:

Benchmark needs large quantities of file shelving ... We need Four Post (Aurora, Tennsco, Spacesaver, etc.) legal and letter size equipment. Large, mechanically assisted mobile shelving systems are also in current demand.

Bill or Ron @ (281) 376-2800

BENCHMARK

filing and shelving systems
12103 Preece Court
Cypress, Texas 77429
REF#FNEED-030703-ON

K1:

NEED: Large quantities of 20d or 23d HM BBF and FF peds for referb . Ken Berardi, **SCP Enterprises** 3438 Ellsworth Road, Ann Arbor, MI 48108 - **call 734-973-1144** REF#FNEED-091503-31

P1:

NEED: Wanted to buy workstations Available in Previously Owned, ASIS, Excellent Condition. Steelcase 9000 or Avenir: 250qty corner Workstations 6x6 53H - 2 pedestals each WS Steelcase 9000 or Avenir: 52qty crnr Workstations 6x6 53H - 2 pedestals each WS Herman Miller AO2 or Ethospace: 300-400 qty crnr WS - 8x8 67H-70H pnls - 2 peds with overheads ea WS **Office Systems Inc.** - Chris Klass **Phone: 952-475-2504** Fax: 952-475-2593 Email: Info@offisys.com **Website: www.offisys.com** REF#FNEED-042103-10

R1:

NEED: to purchase 86 stations 8x8 in 48" or 53" panel height. Any A-grade manufacture will do. The product just needs to be all matching and clean as-is with power and a corner work surface. **Business Furnishings Inc.** Tom Loughney 13465 Inwood Rd. Dallas, TX 75244 **P 972-490-9700 - F 972-490-9702** REF#FNEED-110303-10

Wanted to Buy

Y1:

ONGOING NEED: AOI for office systems furniture complete workstations or warehouse overstock. To include: Herman Miller, Steelcase 9000, Moveable Wall, Avenir, Haworth, Allsteel, and Amseco. Always interested in chairs, files, and any casegoods. Call Andy Smrz today (715) 341-6974 or fax (715) 341-6894.

ADVANTAGE Office Interiors, LLC
 Email: advantageoffice@charter.net
 REF#FNEED-062303-19

M1:

NEED: 40 to 50 HM AO2, highwall, 6x8's, 2 peds, 1 o/h, neutral colors. Please send photos and pricing.

K1:

We are in need of 16ea HM 2 dr 30" lats. Need same style, will paint to match color if needed. Looking for them on east coast. Need to fit under surface.

Z1:

NEED: 41 Haworth Premise 6x8 stations with corners, tall panels, 1 overhang and 2 peds are required. Prefer neutral color. Good as is product. Please forward photos and pricing. Layout is still being finalized- Mary Schipper

Office Furniture & Installations Plus
Providing Workspace Solutions That Work!
813.880.7838 - or 813.967.4306 - cell
www.ofiplus.net
 REF#FNEED-102003-32

B1:

Steelcase dealership looking for minimum 100 to 200 6x6 stations for STOCK. They like to OWN the stations to resell to their customers. The panel height can be 42" or 53" high. They want good as-is. forward a picture, quantity available and a ball-park price loaded. Include the state that the stations are in so I can calculate freight. Jeff Marcero (Formerly with Ohio Desk)

Integrity Wholesale Furniture, LLC
 301 Portland Drive - Vermilion, Ohio 44089 - Cell: 440-742-8288
 Bus: 440-967-7718
 Fax: 440-967-7718
integritywholesale@adelphia.net
 REF#FNEED-102003-36

T1:

NEED: Herman Miller Ethospace parts to full stations. Call or fax George at **Hero Office Systems**
Bus: 952-955-1083 -
Fax: 952-955-2599
Cell: 612-791-7930
 REF#FNEED-051903-ON

T1:

NEED: Allsteel 8000 for refurb - 41" / 43" and 78" / 80" high panels, 48" shelves, independent pedestals, 2 and 4 circuit electric, corner and "T" fillers, wall starters and wall track. For purchase or can trade other 8000 product. We will also entertain as-is multi workstation lots.

COFCO - Call 215-291-4648, or Fax 215-291-8034 - **Will Quinn** ext 302
wquinn@cofcogroup.com or **Dave Kozuch** @ ext 308
dkozuch@cofcogroup.com
 REF#FNEED-051903-14

U1:

NEED: 450 workstations, 48"-53" high. We also need the seating, break room, conference rooms, etc. Client is in the decision process for a January install. Please send anything you have. Mike Manser

Mansers Office Interiors
 714-754-1696 or 714-754-1697 (fax)
 714-863-1980 (mobile)
MManser@Mansers.com
www.Mansers.com
 REF#FNEED-112403-41

X1:

NEED: SC9000 peds. 25" FF & BBF for refurb. We also Cherry pick Avenir inventories for refurb stock.

Ron Schemmel @ Revest Midwest
 2700 NE Winter Street Minneapolis, MN 55413 Ph: 612-362-2305
 Fax: 612-627-1731
rschemmel@rvmw.com
 REF#FNEED-081103-26

W1:

NEED: 300 as-is telemarketing stations 42" high panels, 60"x24 or 30" work surface, 24,30,36 wing panels - Haworth or Herman miller for late July install contact - Tim Zemer **Smart Office Systems**
 2110 Washington ave. Lansing, mi 48910 517-492-7000 - fax 517-492-7005
tzemer@smartofficesystems.com
 REF#FNEED-060903-17

Y1:

NEED: 600 stations of Steelcase-9000. It must have 45 inch corners and be 65 inches high. The trim and fabric must ne TV-1 We will accept other colors if you have one 600 station lot of all one color. We are assuming we will have to buy several small inventories. If you have any inventories you would like us to consider please E-mail us the photos or fax an inventory to 303-663-4797 Or give us a call at 303-663-4656 Joseph @ Office 303-663-4656

X1:

NEED: Herman Miller AO-1 only If you have any inventories you would like us to consider please E-mail us the photos or fax an inventory to **303-663-4797** Or call at **303-663-4656**

Modular System Brokers
modsysbro@msn.com
 REF#FNEED-061603-18

X1:

NEED: 150 Stations of as-is Herman Miller or Haworth combination of 6x6 and 6x8 stations, for August install - 62" or 66" tall - neutral colors. Send pictures and inventories to Tim Zimmer @ **Smart Office Systems** - 2110 South Washington Ave. Lansing MI 48910 - call 517-492-7000 or fax 517-492-7005
tzemer@smartofficesystems.com
 REF#FNEED-061603-18

Wanted to Buy

- I1:**
Wanted: 500 stations Herman Miller Ethospace 6x8 with 36" corner ws + 24"x36" and 24"x60" HT inner-tone flanking wing worksurfaces. Black trim with bbff 24" peds. All frames must be 70" tall. Will look at lesser quantities of 150 + station increments.
Tri Star Systems
 Contact John Viknius
Call - 406-222-8889
john@tristarsurplus.com
 REF#FNEED-091503-29
- Y1:**
NEED: 32 stations of Haworth Unigroup powerbase 62" high with 3"x42" or 48" wings with graphite trim and beige components w/3" corners 2 peds 2 openshelves must be this type have to match existing if panel trim is different I can paint trim send pictures if you have ready to buy also looking for 48 stations of eighter Haworth or Herman Miller in 42high or 48 high corner w/s and 2 peds light colors preferred but send picture of what you got.
 Richard Garcia @ **R & D Installations**
 Ph: 310.212.5322 Fax: 310-835-1256
 email: randdinstall@earthlink.net
 officepartitions.com
 REF#FNEED-062303-19
- J1:**
NEED: We have an ongoing need for Haworth Unigroup - 42" wide X 54" high. Call Linda Engstrom
Brooks Interiors Inc. T 978-694-8808
 F 978-988-2483
lengstrom@brooksinteriors.com
 REF#FNEED-041403-ONGOING
- P1:**
NEED: 40 Units 3' x 2' T-Marketing kting. Inventory needs to be high-low (high on the spline/low dividers) - Power Required - Accessories Required (OH & Task light) - Color - almost any will do. - Location: NorthEast preferred, WE WILL CONSIDER PANEL ONLY INVENTORIES!!! Photos and detailed inventory are a must. - Mitchell H. Kirsch
<http://www.oamsystems.com>
Office Assets Management, Inc.
e-mail: mkirsch@oamsystems.com
 PH: 212-764-1142 Fax: 212-764-5105
 REF#FNEED-091503-37
- R1:**
NEED: 100+ stations of Kimball Cetra workstations with tall panels. Need 7 x 7 and 8 x 8 stations, 2 peds & overheads. Need in 1 year, will buy now.
L2:
NEED: preowned floor to ceiling. Need by the end of the year. Approx. 8 - 10 offices with doors. Send all information
monica@premierofficesolutions.com
Monica H. Stinson
Premier Office Solutions
 374 South Warminster Rd.
 Hatboro, PA 19040
215-734-2300 ext. 135
fax 215-734-2310
 REF#FNEED-092203-37
- Q1:**
NEED: Knoll. 28 6x8 64-70" H - 14 6x7 64-70" H and 8 7x8 and 64-70" H - 13 10x12 with Doors. Panels only. If you have the panels but not the doors they can wait and I will order them. The product originally spect was in a gray. I will show them any project and any interior config. that you show me. The foot print is more important then the components.
 Scott Cornblatt - President
OLS Trading, Inc.
 P(301)296-3100 Ext. 160
 F(301)296-3101
scott@olstrading.com
www.olstrading.com
 REF#FNEED-102703-37
- R1:**
NEED: Steelcase Answer or Steelcase Pathway's Product now. I will consider any inventory. Prefer standing inventories. Must be in 8x8 configuration 65 high only. Please email photos and inventory.
CubeKing
Mark@cubeking.com
 or call 714-368-4748 direct
 714-272-2523 cell
 REF#FNEED-102903-38
- V1:**
Wanted: Connectors for Herman Miller AO3, 2 ways, 3 ways and 4 ways for 63" high panels. Also interested in purchasing AO3 panels, worksurfaces, etc.
T1:
Wanted: Knoll Reff Systems - furniture for refurb. Especially interested in cantilevers, connectors and overheads.
 Contact Mark Houser
Office Furniture Specialist
mhouser27@cs.com
 Or 866-913-8700
 REF#FNEED-111703-40
- V1:**
Wanted: 90 Steelcase 9000 53x35 T/A Panels, complete for refurb.
 Contact: Matt Egan
Transfer Enterprises, Inc
 860-533-3373 ph - 860-533-3375 fx
te9090@aol.com
 REF#FNEED-120803-42

Events Calendar

NEW ... IN THE BOX! **Liquidation !**



Contemporary Wood Veneer Casegoods, including Executive "U", Executive "L", Desk and Credenza Sets, Laterals and Bookcases; Finishes: Mahogany and Cherry.

Conference Tables: Contemporary and Traditional Conference Tables. Include 42" round, 48" round, 8', 10', And 12' Racetrack Tables; Finishes Match Casegoods.



Traditional Wood Veneer Casegoods, With lateral files and Bookcases. Finish: Mahogany.



Call CUSP @ 888-464-9345

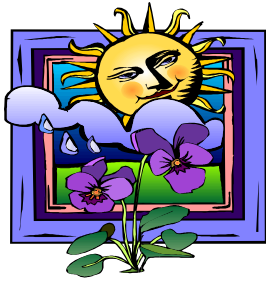
Mark Your Calendars

OFR Spring 2004
March 11, 12, 13, 2004
Pre-Registration Only
Embassy Suites
Orlando, Florida
kdb9565@aol.com

NeoCon West
March 25-26, 2004
L.A. Mart
Los Angeles, California
www.merchandisemart.com

NeoCon World Trade Fair 2004
June 14-16, 2004
Merchandise Mart
Chicago, Illinois
www.merchandisemart.com

For more info and details visit
www.systemsnews.com
To add an event please email to
douglas@furnitureman.com



**You can do
it with the
FMI
Systems
Newsletter**

The latest news and largest
selection of inventories
from around the country
And now there's more

For 2003
advertising
rates and other information call:

(800) 495-8958

Web site link trades
and
banner
advertising
also available
on

www.systemsnews.com

1823 Sherwood Forest ✉
Houston, TX 77043

EthoSource, LLC
Premium pre-owned office furniture

**Your Source
for
Pre-owned Ethospace**

Always buying and selling
Ethospace parts
and complete stations
in large quantities

Contact John Gallen or Blake Botvin
T (610) 286-1766 F (610) 286-1933
johng@ethosource.com or blakeb@ethosource.com

Inside Current Issue . . .

<i>The Holidays are coming</i>	<i>Front Page</i>
<i>Refurb Man Says</i>	<i>Front page</i>
<i>What's on it's way?</i>	<i>1</i>
<i>Events calendar</i>	<i>14</i>

For more great industry
news check out

www.systemsnews.com

All listings ending in

38

will be pulled from the next issue. Contact us if your listings end in this number and you would like them to remain.

T (713) 461-5773

F (713) 461-6250

Email:

douglas@furnitureman.com

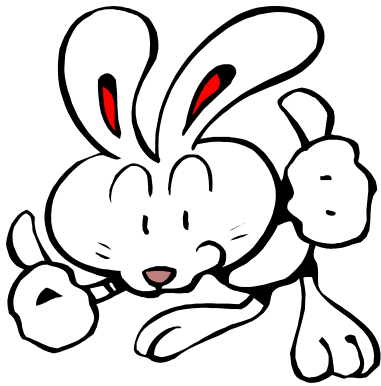


**Office Furniture
Services & Installation
Throughout the
Southeast**

- ?? Disassembly & Loading**
- ?? 70,000 sq.ft. racked
warehouse space**
- ?? Storage trailer parking**
- ?? Installation Services**
- ?? Project managers**
- ?? assigned to individual
?? accounts**

(800) 322-4542
www.facilicon.com





Have a Great *Have* Great Week!

Aeron[®] Chair cost you \$\$\$\$\$
E-Chair costs you **\$248 delivered**

That's the Difference ...
 The Similarities are:

Design / beautifully mesh design; winner of Neocon Best of show

Function / Patented user adjustments

Comfort / contoured mesh back together with customized adjustments.

Call CUSP/E-Chair @ 1-888-464-9345



\$7,500 each, FOB Anaheim, CA



1990 BT Prime Mover
 (Red machine)
 Reach truck model,
 24 volts
 in excellent condition,
 2,000 lb capacity,
 Triple stage mast - reach 230 inches with side shift,
 This is a sit down rider

1990 Atlet
 (Yellow standup machine)
 Order picker, 24 volts in excellent condition, 2,500 lb capacity,
 Triple stage mast - reach 197 inches, comes with multi-stage battery charger



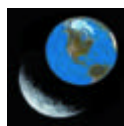
For more information contact Ron Kinney @ Snapguards LLC
 Phone 714- 632-6882 or 714-401-8334
 Email: ron@snapguards.com

“In Stock For Immediate Shipment”

Under Worktop File Centers (29 1/2”wide X 18 1/2”deep X 27 3/4” high)



- ?? Four Drawer File Center
- ?? Two Drawer Lateral Files
- ?? Loop Pulls
- ?? Without Tops
- ?? With locks and adjustable glides
- ?? Finishes: Gray, Taupe, Black



Call CUSP @ 888-464-9345

